

Ek kılavuz

DIN - EN - ASME - JIS - GOST geređince flanşlar

Teknik özellikler



Document ID: 31088



VEGA

1 Ürün tanımı

1.1 Yönergeler

Tanımlanan flanşlar sızdırmazlık şeritli dişli flanşlardır ve G 1 veya G 1½ ile iç dişliler (ISO 228 T1) beraber verilebilir.

Bu ek kılavuzdaki bilgiler 316L malzemesinden yapılan flanşlardan elde edilmiştir. 316L malzeme 1.4404 veya 1.4435'e tekabül eder.

Tüm uzaklık değerleri milimetre cinsinde.

Flanşlar şu standartlarda farklı modellerde mevcuttur:

DIN - Alman Standartlaştırma Enstitüsü (DIN 2501)

EN - Avrupa Normu (EN 1092-1)

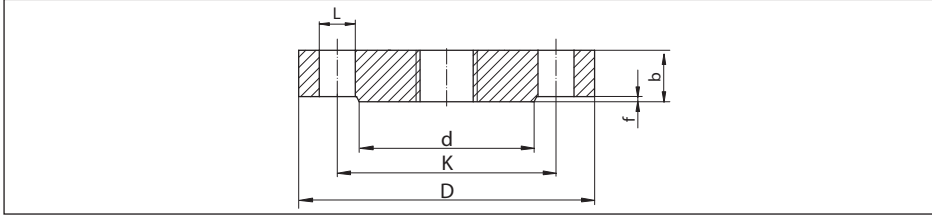
ASME - American Society of Mechanical Engineers (ASME B 16.5)

JIS - Japanese Industrial Standard (B 2210-1984)

GOST - Teknik Mevzuat ve Metroloji Federal Acentası - Rusya (12821-80)

2 Ebatlar

2.1 DIN flanşları (DIN 2501)



Res. 1: Ebatlar - DIN flanşı DIN 2501 (Sızdırmazlık şeridi DIN 2526 C Formu)

- L Delik çapı (Delik sayısı)
d Sızdırmazlık şeridinin çapı
K Cıvata halkası çapı
D Flanş çapı
b Flanşların toplam kalınlığı
f Sızdırmazlık şeridinin yüksekliği

PN 10

DN	D	b	K	d	f	L	~ kg
25 (0.984)	115 (4.528)	16 (0.63)	85 (3.347)	68 (2.677)	2 (0.079)	4 x ø 14 (0.551)	1,23 (2.712)
32 (1.26)	140 (5.512)	16 (0.63)	100 (3.937)	78 (3.071)	2 (0.079)	4 x ø 18 (0.709)	1,8 (3.968)
40 (1.575)	150 (5.906)	16 (0.63)	110 (4.331)	88 (3.465)	3 (0.118)	4 x ø 18 (0.709)	2,09 (4.608)
50 (1.969)	165 (6.496)	18 (0.709)	125 (4.921)	102 (4.016)	3 (0.118)	4 x ø 18 (0.709)	2,88 (6.349)
65 (2.56)	185 (7.284)	18 (0.709)	145 (5.709)	122 (4.803)	3 (0.118)	4 x ø 18 (0.709)	3,66 (8.069)
80 (3.15)	200 (7.874)	20 (0.787)	160 (6.3)	138 (5.433)	3 (0.118)	8 x ø 18 (0.709)	4,83 (10.65)
100 (3.937)	220 (8.661)	20 (0.787)	180 (7.087)	158 (6.221)	3 (0.118)	8 x ø 18 (0.709)	5,75 (12.68)
125 (4.921)	250 (9.843)	22 (0.866)	210 (8.268)	188 (7.402)	3 (0.118)	8 x ø 18 (0.709)	8,59 (18.94)
150 (5.906)	285 (11.22)	22 (0.866)	240 (9.449)	212 (8.347)	3 (0.118)	8 x ø 22 (0.866)	10,6 (23.37)
175 (6.89)	316 (12.44)	24 (0.945)	270 (10.63)	242 (9.528)	3 (0.118)	8 x ø 22 (0.866)	14,3 (31.53)
200 (7.874)	340 (13.39)	24 (0.945)	295 (11.61)	268 (10.55)	3 (0.118)	8 x ø 22 (0.866)	16,9 (37.26)
250 (9.843)	395 (15.55)	26 (1.024)	350 (13.78)	320 (12.6)	3 (0.118)	12 x ø 22 (0.866)	24,7 (54.45)
300 (11.81)	445 (17.52)	26 (1.024)	400 (15.75)	370 (14.57)	4 (0.158)	12 x ø 22 (0.866)	31,9 (70.33)

Tab. 1: Ebatlar - DIN flanşı PN 10. Tüm uzaklık değerleri milimetre cinsinde (in).

PN 16

DN	D	b	K	d	f	L	~ kg
25 (0.984)	115 (4.528)	16 (0.63)	85 (3.346)	68 (2.677)	2 (0.079)	4 x ø 14 (0.551)	1,23 (2.712)
32 (1.26)	140 (5.512)	16 (0.63)	100 (3.937)	78 (3.071)	2 (0.079)	4 x ø 18 (0.709)	1,8 (3.968)
40 (1.575)	150 (5.906)	16 (0.63)	110 (4.331)	88 (3.465)	3 (0.118)	4 x ø 18 (0.709)	2,09 (4.608)
50 (1.969)	165 (6.496)	18 (0.709)	125 (4.921)	102 (4.016)	3 (0.118)	4 x ø 18 (0.709)	2,88 (6.349)
65 (2.559)	185 (7.283)	18 (0.709)	145 (5.709)	122 (4.803)	3 (0.118)	4 x ø 18 (0.709)	3,66 (8.069)
80 (3.15)	200 (7.874)	20 (0.787)	160 (6.299)	138 (5.433)	3 (0.118)	8 x ø 18 (0.709)	4,83 (10.65)
100 (3.937)	220 (8.661)	20 (0.787)	180 (7.087)	158 (6.220)	3 (0.118)	8 x ø 18 (0.709)	5,75 (12.68)
125 (4.921)	250 (9.843)	22 (0.866)	210 (8.268)	188 (7.402)	3 (0.118)	8 x ø 18 (0.709)	8,59 (18.94)
150 (5.906)	285 (11.22)	22 (0.866)	240 (9.449)	212 (8.346)	3 (0.118)	8 x ø 22 (0.866)	10,6 (23.37)
175 (6.89)	316 (12.44)	24 (0.945)	270 (10.63)	242 (9.528)	3 (0.118)	8 x ø 22 (0.866)	14,3 (31.53)
200 (7.874)	340 (13.39)	24 (0.945)	295 (11.61)	268 (10.55)	3 (0.118)	12 x ø 22 (0.866)	16,5 (36.38)
250 (9.843)	405 (15.95)	26 (1.024)	355 (13.98)	320 (12.6)	3 (0.118)	12 x ø 26 (1.024)	25,6 (56.44)
300 (11.81)	460 (18.11)	28 (1.102)	410 (16.14)	378 (14.88)	4 (0.157)	12 x ø 26 (1.024)	36,1 (79.59)

Tab. 2: Ebatlar - DIN flanşı PN 16. Tüm uzaklık değerleri milimetre cinsinde (in).

PN 25

DN	D	b	K	d	f	L	~ kg
25 (0.984)	115 (4.528)	18 (0.709)	85 (3.346)	68 (2.677)	2 (0.079)	4 x ø 14 (0.551)	1,38 (3.042)
32 (1.26)	140 (5.512)	18 (0.709)	100 (3.937)	78 (3.071)	2 (0.079)	4 x ø 18 (0.709)	2,03 (4.475)
40 (1.575)	150 (5.906)	18 (0.709)	110 (4.331)	88 (3.465)	3 (0.118)	4 x ø 18 (0.709)	2,35 (5.101)
50 (1.969)	165 (6.496)	20 (0.787)	125 (4.921)	102 (4.016)	3 (0.118)	4 x ø 18 (0.709)	3,2 (7.055)
65 (2.56)	185 (7.283)	22 (0.866)	145 (5.709)	122 (4.803)	3 (0.118)	8 x ø 18 (0.709)	4,33 (9.546)
80 (3.15)	200 (7.874)	24 (0.945)	160 (6.3)	138 (5.433)	3 (0.118)	8 x ø 18 (0.709)	5,94 (13.1)

DN	D	b	K	d	f	L	~ kg
100 (3.937)	235 (9.252)	24 (0.945)	190 (7.48)	162 (6.378)	3 (0.118)	8 x ø 22 (0.866)	7,64 (16.84)
125 (4.921)	270 (10.63)	26 (1.024)	220 (8.661)	188 (7.402)	3 (0.118)	8 x ø 26 (1.024)	11 (24.25)
150 (5.906)	300 (11.81)	28 (1.102)	250 (9.843)	218 (8.583)	3 (0.118)	8 x ø 26 (1.024)	14,7 (32.41)
175 (6.89)	330 (12.99)	28 (1.102)	280 (11.02)	248 (9.764)	3 (0.118)	12 x ø 26 (1.024)	17,6 (38.80)
200 (7.874)	360 (14.17)	30 (1.181)	310 (12.21)	278 (10.95)	3 (0.118)	12 x ø 26 (1.024)	22,7 (50.05)
250 (9.843)	425 (16.73)	32 (1.26)	370 (14.57)	335 (13.19)	3 (0.118)	16 x ø 30 (1.181)	34,2 (75.4)
300 (11.81)	485 (19.09)	34 (1.339)	430 (16.93)	395 (15.55)	4 (0.157)	16 x ø 30 (1.181)	47,3 (104.3)

Tab. 3: Ebatlar - DIN flanşı PN 25. Tüm uzaklık değerleri milimetre cinsinde (in).

PN 40

DN	D	b	K	d	f	L	~ kg
25 (0.984)	115 (4.528)	18 (0.709)	85 (3.346)	68 (2.677)	2 (0.079)	4 x ø 14 (0.551)	1,38 (3.042)
32 (1.260)	140 (5.512)	18 (0.709)	100 (3.937)	78 (3.071)	2 (0.079)	4 x ø 18 (0.709)	2,03 (4.475)
40 (1.575)	150 (5.906)	18 (0.709)	110 (4.331)	88 (3.465)	3 (0.118)	4 x ø 18 (0.709)	2,35 (5.181)
50 (1.969)	165 (6.496)	20 (0.787)	125 (4.921)	102 (4.016)	3 (0.118)	4 x ø 18 (0.709)	3,2 (7.055)
65 (2.560)	185 (7.283)	22 (0.866)	145 (5.709)	122 (4.803)	3 (0.118)	8 x ø 18 (0.709)	4,33 (9.546)
80 (3.150)	200 (7.874)	24 (0.945)	160 (6.299)	138 (5.433)	3 (0.118)	8 x ø 18 (0.709)	5,94 (13.1)
100 (3.937)	235 (9.252)	24 (0.945)	190 (7.48)	162 (6.378)	3 (0.118)	8 x ø 22 (0.866)	7,64 (16.84)
125 (4.921)	270 (10.63)	26 (1.024)	220 (8.661)	188 (7.402)	3 (0.118)	8 x ø 26 (1.024)	11 (24.25)
150 (5.906)	300 (11.81)	28 (1.102)	250 (9.843)	218 (8.583)	3 (0.118)	8 x ø 26 (1.024)	14,7 (32.41)
175 (6.89)	350 (13.78)	32 (1.26)	295 (11.61)	260 (10.24)	3 (0.118)	12 x ø 30 (1.181)	22,4 (49.38)
200 (7.874)	375 (14.76)	34 (1.339)	320 (12.6)	285 (11.22)	3 (0.118)	12 x ø 30 (1.181)	27,6 (60.85)
250 (9.843)	450 (17.72)	38 (1.496)	385 (15.16)	345 (13.58)	3 (0.118)	12 x ø 33 (1.299)	44,5 (98.11)
300 (11.81)	515 (20.28)	42 (1.654)	450 (17.72)	410 (16.14)	4 (0.157)	16 x ø 33 (1.299)	64,3 (141.8)

Tab. 4: Ebatlar - DIN flanşı PN 40. Tüm uzaklık değerleri milimetre cinsinde (in).

PN 64

DN	D	b	K	d	f	L	~ kg
25 (0.984)	140 (5.512)	24 (0.945)	100 (3.937)	68 (2.677)	2 (0.079)	4 x ø 18 (0.709)	2,65 (5.842)
32 (1.260)	155 (6.102)	24 (0.945)	110 (4.331)	78 (3.071)	2 (0.079)	4 x ø 22 (0.866)	3,24 (7.143)
40 (1.575)	170 (6.693)	26 (1.024)	125 (4.921)	88 (3.465)	3 (0.118)	4 x ø 22 (0.866)	4,09 (9.017)
50 (1.969)	180 (7.087)	26 (1.024)	135 (5.315)	102 (4.016)	3 (0.118)	4 x ø 22 (0.866)	4,51 (9.943)
65 (2.559)	205 (8.071)	26 (1.024)	160 (6.299)	122 (4.803)	3 (0.118)	8 x ø 22 (0.866)	5,71 (12.59)
80 (3.15)	215 (8.465)	28 (1.102)	170 (6.693)	138 (5.433)	3 (0.118)	8 x ø 22 (0.866)	6,92 (15.26)
100 (3.937)	250 (9.843)	30 (1.181)	200 (7.874)	162 (6.378)	3 (0.118)	8 x ø 26 (1.024)	10,1 (22.27)
125 (4.921)	295 (11.61)	34 (1.339)	240 (9.449)	188 (7.402)	3 (0.118)	8 x ø 30 (1.181)	16 (35.27)
150 (5.906)	345 (13.58)	36 (1.417)	280 (11.02)	218 (8.583)	3 (0.118)	8 x ø 33 (1.299)	23,5 (51.81)
175 (6.9)	375 (14.76)	40 (1.575)	310 (12.21)	260 (10.24)	3 (0.118)	12 x ø 33 (1.299)	30,8 (67.9)
200 (7.874)	415 (16.34)	42 (1.654)	345 (13.58)	285 (11.22)	3 (0.118)	12 x ø 36 (1.417)	39,7 (87.52)
250 (9.843)	470 (18.5)	46 (1.811)	400 (15.75)	345 (13.58)	3 (0.118)	12 x ø 36 (1.417)	57,4 (126.5)
300 (11.81)	530 (20.87)	52 (2.047)	460 (18.11)	410 (16.14)	4 (0.157)	16 x ø 36 (1.417)	81 (178.6)

Tab. 5: Ebatlar - DIN flanşı PN 64. Tüm uzaklık değerleri milimetre cinsinde (in).

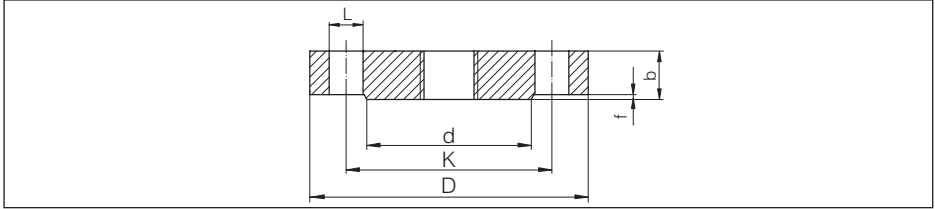
PN 100

DN	D	b	K	d	f	L	~ kg
25 (0.984)	140 (5.512)	24 (0.945)	100 (3.937)	68 (2.677)	2 (0.079)	4 x ø 18 (0.709)	2,65 (5.842)
32 (1.26)	155 (6.102)	24 (0.945)	110 (4.331)	78 (3.071)	2 (0.079)	4 x ø 22 (0.866)	3,24 (7.143)
40 (1.575)	170 (6.693)	26 (1.024)	125 (4.921)	88 (3.465)	3 (0.118)	4 x ø 22 (0.866)	4,09 (9.017)
50 (1.969)	195 (7.677)	28 (1.102)	145 (5.709)	102 (4.016)	3 (0.118)	4 x ø 26 (1.024)	5,84 (12.88)
65 (2.56)	220 (8.661)	30 (1.181)	170 (6.693)	122 (4.803)	3 (0.118)	8 x ø 26 (1.024)	8,03 (17.7)
80 (3.15)	230 (9.055)	32 (1.26)	180 (7.087)	138 (5.433)	3 (0.118)	8 x ø 26 (1.024)	9,43 (20.79)
100 (3.937)	265 (10.43)	36 (1.417)	210 (8.268)	162 (6.378)	3 (0.118)	8 x ø 30 (1.181)	14,3 (31.53)

DN	D	b	K	d	f	L	~ kg
125 (4.921)	315 (12.4)	40 (1.575)	250 (9.843)	188 (7.402)	3 (0.118)	8 x ø 33 (1.299)	22,6 (49.82)
150 (5.906)	355 (13.98)	44 (1.732)	290 (11.42)	218 (8.583)	3 (0.118)	12 x ø 33 (1.299)	31,8 (70.11)
175 (6.89)	385 (15.16)	48 (1.89)	320 (12.6)	260 (10.24)	3 (0.118)	12 x ø 33 (1.3)	41,3 (91.05)
200 (7.874)	430 (16.93)	52 (2.047)	360 (14.17)	285 (11.22)	3 (0.118)	12 x ø 36 (1.417)	56,1 (123.7)
250 (9.843)	505 (19.88)	60 (2.362)	430 (16.93)	345 (13.58)	3 (0.118)	12 x ø 39 (1.535)	89,6 (197.5)
300 (11.81)	585 (23.03)	68 (2.677)	500 (19.69)	410 (16.14)	4 (0.157)	16 x ø 42 (1.654)	119 (262.4)

Tab. 6: Ebatlar - DIN flanşı PN 100. Tüm uzaklık değerleri milimetre cinsinde (in).

2.2 EN flanşları (EN 1092-1)



Res. 2: Ebatlar - EN flanşı EN 1092-1 (Sızdırmazlık şeridi B1)

- L Delik çapı (Delik sayısı)
- d Sızdırmazlık şeridinin çapı
- K Cıvata halkası çapı
- D Flanş çapı
- b Flanşların toplam kalınlığı
- f Sızdırmazlık şeridinin yüksekliği

PN 16

DN	D	b	K	d	f	L	~ kg
25 (0.984)	115 (4.528)	18 (0.709)	85 (3.346)	68 (2.677)	2 (0.079)	4 x ø 14 (0.551)	1,5 (3.307)
32 (1.26)	140 (5.512)	18 (0.709)	100 (3.937)	78 (3.071)	2 (0.079)	4 x ø 18 (0.709)	2 (4.409)
40 (1.575)	150 (5.906)	18 (0.709)	110 (4.331)	88 (3.465)	2 (0.079)	4 x ø 18 (0.709)	2,5 (5.512)
50 (1.969)	165 (6.496)	18 (0.709)	125 (4.921)	102 (4.016)	2 (0.079)	4 x ø 18 (0.709)	2,9 (6.393)
65 (2.559)	185 (7.283)	18 (0.709)	145 (5.709)	122 (4.803)	2 (0.079)	8 x ø 18 (0.709)	3,5 (7.716)
80 (3.15)	200 (7.874)	20 (0.787)	160 (6.299)	138 (5.433)	2 (0.079)	8 x ø 18 (0.709)	4,5 (9.921)

DN	D	b	K	d	f	L	~ kg
100 (3.937)	220 (8.661)	20 (0.787)	180 (7.087)	158 (6.221)	2 (0.079)	8 x ø 18 (0.709)	5,5 (12.13)
125 (4.921)	250 (9.843)	22 (0.866)	210 (8.268)	188 (7.402)	2 (0.079)	8 x ø 18 (0.709)	8 (17.64)
150 (5.906)	285 (11.22)	22 (0.866)	240 (9.449)	212 (8.346)	2 (0.079)	8 x ø 22 (0.866)	10,5 (23.15)
200 (7.874)	340 (13.39)	24 (0.945)	295 (11.61)	268 (10.55)	2 (0.079)	12 x ø 22 (0.866)	16,5 (36.38)
250 (9.843)	405 (15.95)	26 (1.024)	355 (13.98)	320 (12.6)	2 (0.079)	12 x ø 26 (1.024)	25 (55.12)
300 (11.81)	460 (18.11)	28 (1.102)	410 (16.14)	378 (14.88)	2 (0.079)	12 x ø 26 (1.024)	35 (77.16)

Tab. 7: Ebatlar - EN flanşı PN 16. Tüm uzaklık değerleri milimetre cinsinde (in).

PN 25

DN	D	b	K	d	f	L	~ kg
25 (0.984)	115 (4.528)	18 (0.709)	85 (3.346)	68 (2.677)	2 (0.079)	4 x ø 14 (0.551)	1,5 (3.307)
32 (1.260)	140 (5.511)	18 (0.709)	100 (3.937)	78 (3.071)	2 (0.079)	4 x ø 18 (0.709)	2 (4.409)
40 (1.575)	150 (5.906)	18 (0.709)	100 (3.937)	88 (3.465)	2 (0.079)	4 x ø 18 (0.709)	2,5 (5.512)
50 (1.969)	165 (6.496)	20 (0.787)	125 (4.921)	102 (4.016)	2 (0.079)	4 x ø 18 (0.709)	3 (6.614)
65 (2.559)	185 (7.284)	22 (0.866)	145 (5.709)	122 (4.803)	2 (0.079)	8 x ø 18 (0.709)	4,5 (9.921)
80 (3.15)	200 (7.874)	24 (0.945)	160 (6.299)	138 (5.433)	2 (0.079)	8 x ø 18 (0.709)	5,5 (12.13)
100 (3.937)	235 (9.252)	24 (0.945)	190 (7.48)	162 (6.378)	2 (0.079)	8 x ø 22 (0.866)	7,5 (16.54)
125 (4.921)	270 (10.63)	26 (1.024)	220 (8.661)	188 (7.402)	2 (0.079)	8 x ø 26 (1.024)	11 (24.25)
150 (5.906)	300 (11.81)	28 (1.102)	250 (9.843)	218 (8.583)	2 (0.079)	8 x ø 26 (1.024)	14,5 (31.97)
200 (7.874)	360 (14.17)	30 (1.181)	310 (12.21)	278 (10.95)	2 (0.079)	12 x ø 26 (1.024)	22,5 (49.6)
250 (9.843)	425 (16.73)	32 (1.26)	370 (14.57)	335 (13.19)	2 (0.079)	12 x ø 30 (1.181)	33,5 (73.86)
300 (11.81)	485 (19.09)	34 (1.339)	430 (16.93)	395 (15.55)	2 (0.079)	16 x ø 30 (1.181)	46,5 (102.5)

Tab. 8: Ebatlar - EN flanşı PN 25. Tüm uzaklık değerleri milimetre cinsinde (in).

PN 40

DN	D	b	K	d	f	L	~ kg
25 (0.984)	115 (4.528)	18 (0.709)	85 (3.346)	68 (2.677)	2 (0.079)	4 x ø 14 (0.551)	1,5 (3.307)
32 (1.260)	140 (5.512)	18 (0.709)	100 (3.937)	78 (3.071)	2 (0.079)	4 x ø 18 (0.709)	2 (4.409)
40 (1.575)	150 (5.906)	18 (0.709)	110 (4.331)	88 (3.465)	2 (0.079)	4 x ø 18 (0.709)	2,5 (5.511)
50 (1.969)	165 (6.496)	20 (0.787)	125 (4.921)	102 (4.016)	2 (0.079)	4 x ø 18 (0.709)	3 (6.614)
65 (2.559)	185 (7.283)	22 (0.866)	145 (5.709)	122 (4.803)	2 (0.079)	8 x ø 18 (0.709)	4,5 (9.921)
80 (3.15)	200 (7.874)	24 (0.945)	160 (6.299)	138 (5.433)	2 (0.079)	8 x ø 18 (0.709)	5,5 (12.13)
100 (3.937)	235 (9.252)	24 (0.945)	190 (7.48)	162 (6.378)	2 (0.079)	8 x ø 22 (0.866)	7,5 (16.53)
125 (4.921)	270 (10.63)	26 (1.024)	220 (8.661)	188 (7.402)	2 (0.079)	8 x ø 26 (1.024)	11 (24.25)
150 (5.906)	300 (11.81)	28 (1.102)	250 (9.843)	218 (8.583)	2 (0.079)	8 x ø 26 (1.024)	14,5 (31.97)
200 (7.874)	375 (14.76)	36 (1.417)	320 (12.6)	285 (11.22)	2 (0.079)	12 x ø 30 (1.181)	29 (63.93)
250 (9.843)	450 (17.72)	38 (1.496)	385 (15.16)	345 (13.58)	2 (0.079)	12 x ø 33 (1.299)	44,5 (98.11)
300 (11.81)	515 (20.28)	42 (1.654)	450 (17.72)	410 (16.14)	2 (0.079)	16 x ø 33 (1.299)	64 (141.1)

Tab. 9: Ebatlar - EN flanş PN 40. Tüm uzaklık değerleri milimetre cinsinde (in).

PN 63

DN	D	b	K	d	f	L	~ kg
25 (0.984)	140 (5.512)	24 (0.945)	100 (3.937)	68 (2.677)	2 (0.079)	4 x ø 18 (0.709)	2,5 (5.512)
32 (1.26)	155 (6.102)	24 (0.945)	110 (4.331)	78 (3.071)	2 (0.079)	4 x ø 22 (0.866)	3,5 (7.716)
40 (1.575)	170 (6.693)	26 (1.024)	125 (4.921)	88 (3.465)	2 (0.079)	4 x ø 22 (0.866)	4,5 (9.921)
50 (1.969)	180 (7.087)	26 (1.024)	135 (5.315)	102 (4.016)	2 (0.079)	4 x ø 22 (0.866)	5 (11.02)
65 (2.56)	205 (8.071)	26 (1.024)	160 (6.3)	122 (4.803)	2 (0.079)	8 x ø 22 (0.866)	6 (13.23)
80 (3.15)	215 (8.465)	28 (1.102)	170 (6.693)	138 (5.433)	2 (0.079)	8 x ø 22 (0.866)	7,5 (16.54)
100 (3.937)	250 (9.843)	30 (1.181)	200 (7.874)	162 (6.378)	2 (0.079)	8 x ø 26 (1.024)	10,5 (23.15)
125 (4.921)	295 (11.61)	34 (1.339)	240 (9.449)	188 (7.402)	2 (0.079)	8 x ø 30 (1.181)	16,5 (36.38)

DN	D	b	K	d	f	L	~ kg
150 (5.906)	345 (13.58)	36 (1.417)	280 (11.02)	218 (8.583)	2 (0.079)	8 x ø 33 (1.299)	24,5 (54.01)
200 (7.874)	415 (16.34)	42 (1.654)	345 (13.58)	285 (11.22)	2 (0.079)	12 x ø 36 (1.417)	40,5 (89.29)
250 (9.843)	470 (18.5)	46 (1.811)	400 (15.75)	345 (13.58)	3 (0.118)	12 x ø 36 (1.417)	58 (127.9)
300 (11.81)	530 (20.87)	52 (2.047)	460 (18.11)	410 (16.14)	2 (0.079)	16 x ø 36 (1.417)	83,5 (184.1)

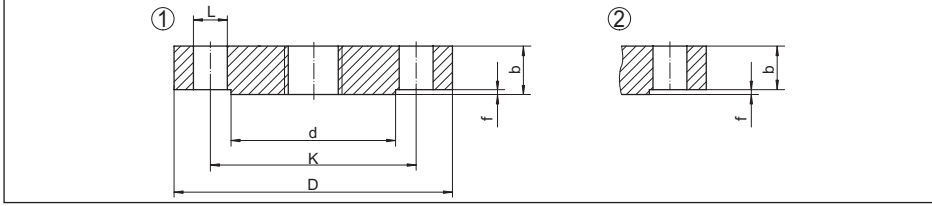
Tab. 10: Ebatlar - EN flanşı PN 63. Tüm uzaklık değerleri milimetre cinsinde (in).

PN 100

DN	D	b	K	d	f	L	~ kg
25 (0.984)	140 (5.512)	24 (0.945)	100 (3.937)	68 (2.677)	2 (0.079)	4 x ø 18 (0.709)	2,5 (5.512)
32 (1.26)	155 (6.102)	24 (0.945)	110 (4.331)	78 (3.071)	2 (0.079)	4 x ø 22 (0.866)	3,5 (7.716)
40 (1.575)	170 (6.693)	26 (1.024)	125 (4.921)	88 (3.465)	2 (0.079)	4 x ø 22 (0.866)	4,5 (9.921)
50 (1.969)	195 (7.677)	28 (1.102)	145 (5.709)	102 (4.016)	2 (0.079)	4 x ø 26 (1.024)	6 (13.23)
65 (2.56)	220 (8.661)	30 (1.181)	170 (6.693)	122 (4.803)	2 (0.079)	8 x ø 26 (1.024)	8 (17.64)
80 (3.15)	230 (9.055)	32 (1.26)	180 (7.087)	138 (5.433)	2 (0.079)	8 x ø 26 (1.024)	9,5 (20.94)
100 (3.937)	265 (10.43)	36 (1.417)	210 (8.268)	162 (6.378)	2 (0.079)	8 x ø 30 (1.181)	14 (30.87)
125 (4.921)	315 (12.4)	40 (1.575)	250 (9.843)	188 (7.402)	2 (0.079)	8 x ø 33 (1.299)	22,5 (49.6)
150 (5.906)	355 (13.98)	44 (1.732)	290 (11.42)	218 (8.583)	2 (0.079)	12 x ø 33 (1.299)	30,5 (67.24)
200 (7.874)	430 (16.93)	52 (2.047)	360 (14.17)	285 (11.22)	2 (0.079)	12 x ø 36 (1.417)	54,5 (120.2)
250 (9.843)	505 (19.88)	60 (2.362)	430 (16.93)	345 (13.58)	2 (0.079)	12 x ø 39 (1.535)	87,5 (192.9)
300 (11.81)	585 (23.03)	68 (2.677)	500 (19.69)	410 (16.14)	2 (0.079)	16 x ø 42 (1.654)	131,5 (289.9)

Tab. 11: Ebatlar - EN flanşı PN 100. Tüm uzaklık değerleri milimetre cinsinde (in).

2.3 ASME flanşları (ASME B 16.5)



Res. 3: Ebatlar - ASME flanşı B 16.5 (Sızdırmazlık şeridi RF)

- 1 Class 400'e kadar ölçüm
2 Class 400'den itibaren ölçüm

- L Delik çapı (Delik sayısı)
d Sızdırmazlık şeridinin çapı
K Cıvata halkası çapı
D Flanş çapı
b Flanşların toplam kalınlığı
f Sızdırmazlık şeridi yüksekliği 150 lb/300 lb: 1,6 mm (0.06 in) veya 600 lb üzeri: 6,4 mm (0.25 in)

Class 150

DN	D	b	d	K	L	~ kg
1"	108 (4.252)	14,2 (0.559)	50,8 (2)	79,2 (3.118)	4 x ø 15,7 (0.618)	0,86 (1.896)
1¼"	117,3 (4.618)	15,7 (0.618)	63,5 (2.5)	88,9 (3.5)	4 x ø 15,7 (0.618)	1,17 (2.579)
1½"	127 (5)	17,5 (0.689)	73,2 (2.882)	98,6 (3.882)	4 x ø 15,7 (0.618)	1,53 (3.373)
2"	152,4 (6)	19,1 (0.752)	91,9 (3.618)	120,7 (4.752)	4 x ø 19,1 (0.752)	2,42 (5.335)
2½"	177,8 (7)	22,4 (0.882)	104,6 (4.118)	139,7 (5.5)	4 x ø 19,1 (0.752)	3,94 (8.686)
3"	190,5 (7.5)	23,9 (0.941)	127 (5)	152,4 (6)	4 x ø 19,1 (0.752)	4,93 (10.87)
3½"	215,9 (8.5)	23,9 (0.941)	139,7 (5.5)	177,8 (7)	8 x ø 19,1 (0.752)	6,17 (13.6)
4"	228,6 (9)	23,9 (0.941)	157,2 (6.189)	190,5 (7.5)	8 x ø 19,1 (0.752)	7 (15.43)
5"	254 (10)	23,9 (0.941)	185,7 (7.311)	215,9 (8.5)	8 x ø 22,4 (0.882)	8,63 (19.03)
6"	279,4 (11)	25,4 (1)	215,9 (8.5)	241,3 (9.5)	8 x ø 22,4 (0.882)	11,3 (24.91)
8"	342,9 (13.5)	28,4 (1.118)	269,7 (10.62)	298,5 (11.75)	8 x ø 22,4 (0.882)	19,6 (43.21)
10"	406,4 (16)	30,2 (1.189)	323,8 (12.75)	362 (14.25)	12 x ø 25,4 (1)	28,8 (63.49)

Tab. 12: Ebatlar - ASME flanşı Class 150. Tüm uzaklık değerleri milimetre cinsinde (in).

Class 300

DN	D	b	d	K	L	~ kg
1"	124 (4.882)	17,5 (0.689)	50,8 (2)	88,9 (3.5)	4 x ø 19,1 (0.752)	1,39 (3.064)
1¼"	133,4 (5.252)	19,1 (0.752)	63,5 (2.5)	98,6 (3.882)	4 x ø 19,1 (0.752)	1,79 (3.946)
1½"	155,4 (6.118)	20,6 (0.811)	73,2 (2.882)	114,3 (4.5)	4 x ø 22,4 (0.882)	2,66 (5.864)
2"	165,1 (6.5)	22,4 (0.882)	91,9 (3.618)	127 (5)	8 x ø 19,1 (0.752)	3,18 (7.011)
2½"	190,5 (7.5)	25,4 (1)	104,6 (4.118)	149,4 (5.882)	8 x ø 22,4 (0.882)	4,85 (10.69)
3"	209,5 (8.248)	28,4 (1.118)	127 (5)	168,1 (6.618)	8 x ø 22,4 (0.882)	6,81 (15.01)
3½"	228,6 (9)	30,2 (1.189)	139,7 (5.5)	184,2 (7.252)	8 x ø 22,4 (0.882)	8,71 (19.2)
4"	254 (10)	31,8 (1.252)	157,2 (6.189)	200,2 (7.882)	8 x ø 22,4 (0.882)	11,5 (25.35)
5"	279,4 (11)	35,1 (1.382)	185,7 (7.311)	235 (9.252)	8 x ø 22,4 (0.882)	15,6 (34.39)
6"	317,5 (12.5)	36,6 (1.441)	215,9 (8.5)	269,7 (10.62)	12 x ø 22,4 (0.882)	20,9 (46.08)
8"	381 (15)	41,1 (1.618)	269,7 (10.62)	330,2 (13)	12 x ø 25,4 (1)	34,3 (75.62)
10"	444,5 (17.5)	47,8 (1.882)	323,8 (12.75)	387,4 (15.25)	16 x ø 28,4 (1.118)	53,3 (117.5)

Tab. 13: Ebatlar - ASME flanşı Class 300. Tüm uzaklık değerleri milimetre cinsinde (in).

Class 600

DN	D	b	d	K	L	~ kg
1"	124 (4.882)	17,5 (0.689)	50,8 (2)	88,9 (3.5)	4 x ø 19,1 (0.752)	1,6 (3.527)
1¼"	133,4 (5.252)	20,6 (0.811)	63,5 (2.5)	98,6 (3.882)	4 x ø 19,1 (0.752)	2,23 (4.916)
1½"	155,4 (6.118)	22,4 (0.882)	73,2 (2.882)	114,3 (4.5)	4 x ø 22,4 (0.882)	3,25 (7.165)
2"	165,1 (6.5)	25,4 (1)	91,9 (3.618)	127 (5)	8 x ø 19,1 (0.752)	4,15 (9.15)
2½"	190,5 (7.5)	28,4 (1.118)	104,6 (4.118)	149,4 (5.882)	8 x ø 22,4 (0.882)	6,13 (13.51)
3"	209,6 (8.252)	31,8 (1.252)	127 (5)	168,1 (6.618)	8 x ø 22,4 (0.882)	8,44 (18.61)
3½"	228,6 (9)	35,1 (1.382)	139,7 (5.5)	184,2 (7.252)	8 x ø 25,4 (1)	11 (24.25)
4"	273,1 (10.75)	38,1 (1.5)	157,2 (6.189)	215,9 (8.5)	8 x ø 25,4 (1)	17,3 (38.14)
5"	330,2 (13)	44,5 (1.752)	185,7 (7.311)	266,7 (10.5)	8 x ø 28,4 (1.118)	29,4 (64.82)

DN	D	b	d	K	L	~ kg
6"	355,6 (14)	47,8 (1.882)	215,9 (8.5)	292,1 (11.5)	12 x ø 28,4 (1.118)	36,1 (79.59)
8"	419,1 (16.5)	55,6 (2.189)	269,7 (10.62)	349,3 (13.75)	12 x ø 31,8 (1.252)	58,9 (129.9)
10"	508 (20)	63,5 (2.5)	323,8 (12.75)	431,8 (17)	16 x ø 35,1 (1.382)	97,5 (215)

Tab. 14: Ebatlar - ASME flanşı Class 600. Tüm uzaklık değerleri milimetre cinsinde (in).

Class 900

DN	D	b	d	K	L	~ kg
1"	149,4 (5.882)	28,4 (1.118)	50,8 (2)	101,6 (4)	4 x ø 25,4 (1)	3,57 (7.871)
1¼"	158,8 (6.252)	28,4 (1.118)	63,5 (2.5)	111,3 (4.382)	4 x ø 25,4 (1)	4,14 (9.127)
1½"	177,8 (7)	31,8 (1.252)	73,2 (2.882)	124 (4.882)	4 x ø 28,4 (1.118)	5,75 (12.68)
2"	215,9 (8.5)	38,1 (1.5)	91,9 (3.618)	165,1 (6.5)	8 x ø 25,4 (1)	10,1 (22.27)
2½"	244,4 (9.622)	41,1 (1.618)	104,6 (4.118)	190,5 (7.5)	8 x ø 28,4 (1.118)	14 (30.86)
3"	241,3 (9.5)	38,1 (1.5)	127 (5)	190,5 (7.5)	8 x ø 25,4 (1)	13,1 (28.9)
4"	292,1 (11.5)	44,5 (1.752)	157,2 (6.19)	235 (9.252)	8 x ø 31,8 (1.252)	26,9 (59.3)
5"	349,3 (13.75)	50,8 (2)	185,7 (7.311)	279,4 (11)	8 x ø 35,1 (1.382)	36,5 (80.47)
6"	381 (15)	55,6 (2.19)	215,9 (8.5)	317,5 (12.5)	12 x ø 31,8 (1.252)	47,4 (104.5)
8"	469,9 (18.5)	63,5 (2.5)	269,7 (10.62)	393,7 (15.5)	12 x ø 38,1 (1.5)	82,5 (181.9)
10"	546,1 (21.5)	69,9 (2.752)	323,8 (12.75)	469,9 (18.5)	16 x ø 38,1 (1.5)	122 (269)

Tab. 15: Ebatlar - ASME flanşı Class 900. Tüm uzaklık değerleri milimetre cinsinde (in).

Class 1500

DN	D	b	d	K	L	~ kg
1"	149,4 (5.882)	28,4 (1.118)	50,8 (2)	101,6 (4)	4 x ø 25,4 (1)	3,57 (7.871)
1¼"	158,8 (6.252)	28,4 (1.118)	63,5 (2.5)	111,3 (4.382)	4 x ø 25,4 (1)	4,14 (9.127)
1½"	177,8 (7)	31,8 (1.252)	73,2 (2.882)	124 (4.882)	4 x ø 28,4 (1.118)	5,75 (12.68)
2"	215,9 (8.5)	38,1 (1.5)	91,9 (3.618)	165,1 (6.5)	8 x ø 25,4 (1)	10,1 (22.27)
2½"	244,4 (9.622)	41,1 (1.618)	104,6 (4.118)	190,5 (7.5)	8 x ø 28,4 (1.118)	14 (30.87)
3"	266,7 (10.5)	47,8 (1.882)	127 (5)	203,2 (8)	8 x ø 31,8 (1.252)	19,1 (42.11)
4"	311,2 (12.25)	53,8 (2.118)	157,2 (6.19)	241,3 (9.5)	8 x ø 35,1 (1.382)	29,9 (65.92)

DN	D	b	d	K	L	~ kg
5"	374,7 (14.75)	73,2 (2.882)	185,7 (7.311)	292,1 (11.5)	8 x ø 41,1 (1.618)	58,4 (128.8)
6"	393,7 (15.5)	82,6 (3.252)	215,9 (8.5)	317,5 (12.5)	12 x ø 38,1 (1.5)	71,8 (158.3)
8"	482,6 (19)	91,9 (3.618)	269,7 (10.62)	393,7 (15.5)	12 x ø 44,5 (1.752)	122 (269)
10"	584,2 (23)	108 (4.252)	323,8 (12.75)	482,6 (19)	16 x ø 50,8 (2)	210 (463)

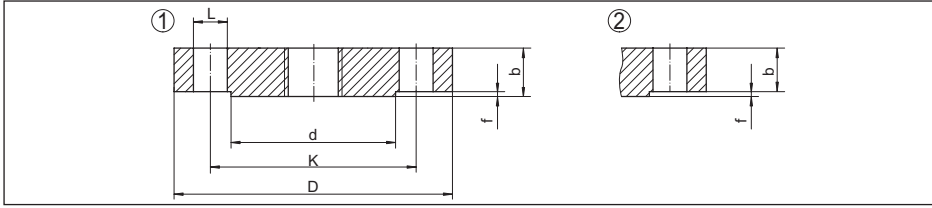
Tab. 16: Ebatlar - ASME flanşı Class 1500. Tüm uzaklık değerleri milimetre cinsinde (in).

Class 2500

DN	D	b	d	K	L	~ kg
1"	158,8 (6.252)	35,1 (1.382)	50,8 (2)	108 (4.252)	4 x ø 25,4 (1)	4,96 (10.94)
1¼"	184,2 (7.252)	38,1 (1.5)	63,5 (2.5)	130 (5.118)	4 x ø 28,4 (1.118)	7,35 (16.2)
1½"	203,2 (8)	44,5 (1.752)	73,2 (2.882)	146,1 (5.752)	4 x ø 31,8 (1.252)	10,4 (22.93)
2"	235 (9.252)	50,8 (2)	91,9 (3.618)	171,5 (6.752)	8 x ø 28,4 (1.118)	15,6 (34.39)
2½"	266,7 (10.5)	57,2 (2.252)	104,6 (4.118)	196,9 (7.752)	8 x ø 31,8 (1.252)	22,6 (49.83)
3"	304,8 (12)	66,5 (2.618)	127 (5)	228,6 (9)	8 x ø 35,1 (1.382)	34,8 (76.72)
4"	355,6 (14)	76,2 (3)	157,2 (6.2)	273,1 (10.75)	8 x ø 41,1 (1.618)	53,9 (118.8)
5"	419,1 (16.5)	91,9 (3.618)	185,7 (7.311)	323,8 (12.75)	8 x ø 47,8 (1.882)	90,8 (200.2)
6"	482,6 (19)	108 (4.252)	215,9 (8.5)	368,3 (14.5)	12 x ø 53,8 (2.118)	141 (310.9)
8"	552,5 (21.75)	127 (5)	269,7 (10.62)	438,2 (17.25)	12 x ø 53,8 (2.118)	214 (471.8)
10"	673,1 (26.5)	165,1 (6.5)	323,8 (12.75)	539,8 (21.25)	12 x ø 66,5 (2.618)	411 (906.1)

Tab. 17: Ebatlar - ASME flanşı Class 2500. Tüm uzaklık değerleri milimetre cinsinde (in).

2.4 JIS flanşları (B 2210-1984)



Res. 4: Ebatlar - JIS flanşı (Regular Flange)

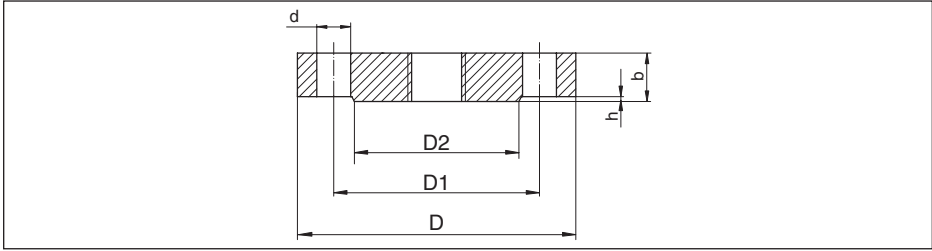
- L Delik çapı (Delik sayısı)
d Sızdırmazlık şeridinin çapı
K Cıvata halkası çapı
D Flanş çapı
b Flanşların toplam kalınlığı
f Sızdırmazlık şeridinin yüksekliği

10 K

DN	D	b	K	d	f	L
25 (0.984)	125 (4.921)	14 (0.551)	90 (3.543)	67 (2.638)	1 (0.039)	4 x ø 19 (0.748)
32 (1.26)	135 (5.315)	16 (0.63)	100 (3.937)	76 (2.992)	2 (0.079)	4 x ø 19 (0.748)
40 (1.575)	140 (5.512)	16 (0.63)	105 (4.134)	81 (3.189)	2 (0.079)	4 x ø 19 (0.748)
50 (1.969)	155 (6.102)	16 (0.63)	120 (4.724)	96 (3.78)	2 (0.079)	4 x ø 19 (0.748)
65 (2.56)	175 (6.89)	18 (0.709)	140 (5.512)	116 (4.567)	2 (0.079)	4 x ø 19 (0.748)
80 (3.15)	185 (7.284)	18 (0.709)	150 (5.906)	126 (4.961)	2 (0.079)	8 x ø 19 (0.748)
100 (3.937)	210 (8.268)	18 (0.709)	175 (6.9)	151 (5.945)	2 (0.079)	8 x ø 19 (0.748)
125 (4.921)	250 (9.843)	20 (0.787)	210 (8.268)	182 (7.165)	2 (0.079)	8 x ø 23 (0.906)
150 (5.906)	280 (11.02)	22 (0.866)	240 (9.449)	212 (8.347)	2 (0.079)	8 x ø 23 (0.906)
200 (7.874)	330 (12.99)	22 (0.866)	290 (11.42)	262 (10.32)	2 (0.079)	12 x ø 23 (0.906)
250 (9.843)	400 (15.75)	24 (0.945)	355 (13.98)	324 (12.76)	2 (0.079)	12 x ø 25 (0.984)
300 (11.81)	445 (17.52)	24 (0.945)	400 (15.75)	368 (14.49)	3 (0.118)	16 x ø 25 (0.984)

Tab. 18: Ebatlar - JIS flanşı 10 K (B 2210-1984) Regular Flange. Tüm uzaklık değerleri milimetre cinsinde (in).

2.5 GOST flanşları (GOST 12815-80)



Res. 5: Ebatlar - GOST flanşı (GOST 12815-80, Modification 1)

- d Delik çapı (Delik sayısı)
 $D2$ Sızdırmazlık şeridinin çapı
 $D1$ Cıvata halkası çapı
 D Flanş çapı
 b Flanşların toplam kalınlığı
 h Sızdırmazlık şeridinin yüksekliği

PN 16

DN	D	D1	D2	b	h	d
25 (0.984)	115 (4.528)	85 (3.347)	68 (2.677)	12 (0.472)	2 (0.079)	4 x \emptyset 14 (0.551)
32 (1.26)	135 (5.315)	100 (3.937)	78 (3.071)	13 (0.512)	2 (0.079)	4 x \emptyset 18 (0.709)
40 (1.575)	145 (5.709)	110 (4.331)	88 (3.465)	13 (0.512)	3 (0.118)	4 x \emptyset 18 (0.709)
50 (1.969)	160 (6.299)	125 (4.921)	102 (4.016)	13 (0.512)	3 (0.118)	4 x \emptyset 18 (0.709)
65 (2.56)	180 (7.087)	145 (5.709)	122 (4.803)	15 (0.591)	3 (0.118)	4 x \emptyset 18 (0.709)
80 (3.15)	195 (7.677)	160 (6.299)	133 (5.236)	17 (0.669)	3 (0.118)	8 x \emptyset 18 (0.709)
100 (3.937)	215 (8.465)	180 (7.087)	158 (6.221)	17 (0.669)	3 (0.118)	8 x \emptyset 18 (0.709)
125 (4.921)	245 (9.646)	210 (8.268)	184 (7.244)	19 (0.748)	3 (0.118)	8 x \emptyset 18 (0.709)
150 (5.906)	280 (11.02)	240 (9.449)	212 (8.347)	19 (0.748)	3 (0.118)	8 x \emptyset 22 (0.866)
200 (7.874)	335 (13.19)	295 (11.61)	268 (10.55)	21 (0.827)	3 (0.118)	12 x \emptyset 22 (0.866)
250 (9.843)	405 (15.95)	355 (13.98)	320 (12.6)	23 (0.906)	3 (0.118)	12 x \emptyset 26 (1.024)

Tab. 19: Ebatlar - GOST flanşı PN 16. Tüm uzaklık değerleri milimetre cinsinde (in).

PN 25

DN	D	D1	D2	b	h	d
25 (0.984)	115 (4.528)	85 (3.347)	68 (2.677)	14 (0.551)	2 (0.079)	4 x ø 14 (0.551)
32 (1.26)	135 (5.315)	100 (3.937)	78 (3.071)	16 (0.63)	2 (0.079)	4 x ø 18 (0.709)
40 (1.575)	145 (5.709)	110 (4.331)	88 (3.465)	16 (0.63)	3 (0.118)	4 x ø 18 (0.709)
50 (1.969)	160 (6.299)	125 (4.921)	102 (4.016)	17 (0.669)	3 (0.118)	4 x ø 18 (0.709)
65 (2.559)	180 (7.087)	145 (5.709)	122 (4.803)	19 (0.748)	3 (0.118)	8 x ø 18 (0.709)
80 (3.15)	195 (7.677)	160 (6.299)	133 (5.236)	19 (0.748)	3 (0.118)	8 x ø 18 (0.709)
100 (3.937)	230 (9.055)	190 (7.48)	158 (6.221)	21 (0.827)	3 (0.118)	8 x ø 22 (0.866)
125 (4.921)	270 (10.63)	220 (8.661)	184 (7.244)	23 (0.906)	3 (0.118)	8 x ø 26 (1.024)
150 (5.906)	300 (11.81)	250 (9.843)	212 (8.347)	25 (0.984)	3 (0.118)	8 x ø 26 (1.024)
200 (7.874)	360 (14.17)	310 (12.21)	278 (10.95)	27 (1.063)	3 (0.118)	12 x ø 26 (1.024)
250 (9.843)	425 (16.73)	370 (14.57)	335 (13.19)	29 (1.142)	3 (0.118)	12 x ø 30 (1.181)

Tab. 20: Ebatlar - GOST flanşı PN 25. Tüm uzaklık değerleri milimetre cinsinde (in).

PN 40

DN	D	D1	D2	b	h	d
25 (0.984)	115 (4.528)	85 (3.347)	68 (2.677)	14 (0.551)	2 (0.079)	4 x ø 14 (0.551)
32 (1.26)	135 (5.315)	100 (3.937)	78 (3.071)	16 (0.63)	2 (0.079)	4 x ø 18 (0.709)
40 (1.575)	145 (5.709)	110 (4.331)	88 (3.465)	16 (0.63)	3 (0.118)	4 x ø 18 (0.709)
50 (1.969)	160 (6.3)	125 (4.921)	102 (4.016)	17 (0.669)	3 (0.118)	4 x ø 18 (0.709)
65 (2.559)	180 (7.087)	145 (5.709)	122 (4.803)	19 (0.748)	3 (0.118)	8 x ø 18 (0.709)
80 (3.15)	195 (7.677)	160 (6.299)	133 (5.236)	21 (0.827)	3 (0.118)	8 x ø 18 (0.709)
100 (3.937)	230 (9.055)	190 (7.480)	158 (6.221)	23 (0.906)	3 (0.118)	8 x ø 22 (0.866)
125 (4.921)	270 (10.63)	220 (8.661)	184 (7.244)	25 (0.984)	3 (0.118)	8 x ø 26 (1.024)
150 (5.906)	300 (11.81)	250 (9.843)	212 (8.347)	27 (1.063)	3 (0.118)	8 x ø 26 (1.024)

DN	D	D1	D2	b	h	d
200 (7.874)	375 (14.76)	320 (12.6)	285 (11.22)	35 (1.378)	3 (0.118)	12 x ø 30 (1.181)
250 (9.843)	445 (17.52)	385 (15.16)	345 (13.58)	39 (1.535)	3 (0.118)	12 x ø 33 (1.299)

Tab. 21: Ebatlar - GOST flanşı PN 40. Tüm uzaklık değerleri milimetre cinsinde (in).

PN 63

DN	D	D1	D2	b	h	d
25 (0.984)	135 (5.315)	100 (3.937)	68 (2.677)	20 (0.787)	2 (0.079)	4 x ø 18 (0.709)
32 (1.26)	150 (5.906)	110 (4.331)	78 (3.071)	21 (0.827)	2 (0.079)	4 x ø 22 (0.866)
40 (1.575)	165 (6.496)	125 (4.921)	88 (3.465)	21 (0.827)	3 (0.118)	4 x ø 22 (0.866)
50 (1.969)	175 (6.89)	135 (5.315)	102 (4.016)	23 (0.906)	3 (0.118)	4 x ø 22 (0.866)
65 (2.559)	200 (7.874)	160 (6.299)	122 (4.803)	25 (0.984)	3 (0.118)	8 x ø 22 (0.866)
80 (3.15)	210 (8.268)	170 (6.693)	133 (5.236)	27 (1.063)	3 (0.118)	8 x ø 22 (0.866)
100 (3.937)	250 (9.843)	200 (7.874)	158 (6.221)	29 (1.142)	3 (0.118)	8 x ø 26 (1.024)
125 (4.921)	295 (11.61)	240 (9.449)	184 (7.244)	33 (1.3)	3 (0.118)	8 x ø 30 (1.181)
150 (5.906)	340 (13.39)	280 (11.02)	212 (8.347)	35 (1.378)	3 (0.118)	8 x ø 33 (1.299)
200 (7.874)	405 (15.95)	345 (13.58)	285 (11.22)	41 (1.614)	3 (0.118)	12 x ø 36 (1.417)
250 (9.843)	470 (18.5)	400 (15.75)	345 (13.58)	45 (1.772)	3 (0.118)	12 x ø 36 (1.417)

Tab. 22: Ebatlar - GOST flanşı PN 63. Tüm uzaklık değerleri milimetre cinsinde (in).

PN 100

DN	D	D1	D2	b	h	d
25 (0.984)	135 (5.315)	100 (3.937)	68 (2.677)	22 (0.866)	2 (0.079)	4 x ø 18 (0.709)
32 (1.26)	150 (5.906)	110 (4.331)	78 (3.071)	22 (0.866)	2 (0.079)	4 x ø 22 (0.866)
40 (1.575)	165 (6.496)	125 (4.921)	88 (3.465)	23 (0.906)	3 (0.118)	4 x ø 22 (0.866)
50 (1.969)	195 (7.677)	145 (5.709)	102 (4.016)	25 (0.984)	3 (0.118)	4 x ø 26 (1.024)
65 (2.56)	220 (8.661)	170 (6.693)	122 (4.803)	29 (1.142)	3 (0.118)	8 x ø 26 (1.024)

DN	D	D1	D2	b	h	d
80 (3.15)	230 (9.055)	180 (7.087)	133 (5.236)	31 (1.221)	3 (0.118)	8 x ø 26 (1.024)
100 (3.937)	265 (10.43)	210 (8.268)	158 (6.221)	35 (1.378)	3 (0.118)	8 x ø 30 (1.181)
125 (4.921)	310 (12.21)	250 (9.843)	184 (7.244)	39 (1.535)	3 (0.118)	8 x ø 33 (1.299)
150 (5.906)	350 (13.78)	290 (11.42)	212 (8.347)	43 (1.693)	3 (0.118)	12 x ø 33 (1.299)
200 (7.874)	430 (16.93)	360 (14.17)	285 (11.22)	51 (2.008)	3 (0.118)	12 x ø 36 (1.417)
250 (9.843)	500 (19.69)	430 (16.93)	345 (13.58)	57 (2.244)	3 (0.118)	12 x ø 39 (1.535)

Tab. 23: Ebatlar - GOST flanşı PN 100. Tüm uzaklık değerleri milimetre cinsinde (in).

3 Basınç - Sıcaklık Tabloları

3.1 Basınç - Sıcaklık Tablosu - EN flanşları

Değerler 316 L malzeme flanşlardan yararlanılarak çıkarılmıştır.

PN	16	25	40	63	100
RT	16 (232.1)	25 (362.6)	40 (580.2)	63 (913.7)	100 (1450)
50 °C (122 °F)	15,6 (226.3)	24,4 (353.9)	39,1 (567.1)	61,1 (886.2)	97,8 (1419)
100 °C (212 °F)	14,2 (206)	22,2 (322)	35,6 (516.3)	56 (812.2)	88,9 (1289)
150 °C (302 °F)	12,8 (185.7)	20 (290.1)	32 (464.1)	50,4 (731)	80 (1160)
200 °C (392 °F)	11,7 (169.7)	18,3 (265.4)	29,3 (425)	46,2 (670.1)	73,3 (1063)
250 °C (482 °F)	10,9 (158.1)	17 (246.6)	27,2 (394.5)	42,8 (620.8)	68 (986.3)
300 °C (572 °F)	10,3 (149.4)	16,1 (233.5)	25,8 (374.2)	40,6 (588.9)	64,4 (934)
350 °C (662 °F)	9,9 (143.6)	15,4 (223.4)	24,7 (358.2)	38,9 (564.2)	61,8 (896.3)
400 °C (752 °F)	9,6 (139.2)	15 (217.6)	24 (348.1)	37,8 (548.2)	60 (870.2)

Tab. 24: Basınç - Sıcaklık Tablosu - EN flanşları. Tüm veriler bar cinsinde (psig).

RT Sıcaklık aralığı -10 ... +50 °C

3.2 Basınç - Sıcaklık Tablosu - ASME flanşları

Değerler 316 L malzeme flanşlardan yararlanılarak çıkarılmıştır.

Class	150	300	600	900	1500	2500
RT	15,9 (230.6)	41,4 (600.5)	82,7 (1200)	124,1 (1800)	206,8 (2999)	344,7 (5000)
50 °C (122 °F)	15,3 (221.9)	40 (580.2)	80 (1160)	120,1 (1742)	200,1 (2902)	333,5 (4837)
100 °C (212 °F)	13,3 (192.9)	34,8 (504.7)	69,6 (1010)	104,4 (1514)	173,9 (2522)	289,9 (4205)
150 °C (302 °F)	12 (174.1)	31,4 (455.4)	62,8 (910.8)	94,2 (1366)	157 (2277)	261,6 (3794)
200 °C (392 °F)	11,2 (162.4)	29,2 (423.5)	58,3 (845.6)	87,5 (1269)	145,8 (2115)	243 (3524)
250 °C (482 °F)	10,5 (152.3)	27,5 (398.9)	54,9 (796.3)	82,4 (1195)	137,3 (1991)	228,9 (3320)
300 °C (572 °F)	10 (145)	26,1 (378.6)	52,1 (755.7)	78,2 (1134)	130,3 (1890)	217,2 (3150)
325 °C (617 °F)	9,3 (134.9)	25,5 (369.9)	51 (739.7)	76,4 (1108)	127,4 (1848)	212,3 (3079)
350 °C (662 °F)	8,4 (121.8)	25,1 (364.1)	50,1 (726.6)	75,2 (1091)	125,4 (1819)	208,9 (3030)
375 °C (707 °F)	7,4 (107.3)	24,8 (359.7)	49,5 (717.9)	74,3 (1078)	123,8 (1796)	206,3 (2992)
400 °C (752 °F)	6,5 (94.28)	24,3 (352.4)	48,6 (704.9)	72,9 (1057)	121,5 (1762)	202,5 (2937)

Tab. 25: Basınç-Sıcaklık Tablosu - ASME Flanşları. Tüm veriler bar cinsinde (psig).

RT Sıcaklık aralığı -29 ... +38 °C

3.3 Basınç - Sıcaklık Tablosu - GOST flanşları

Değerler 316 L malzeme flanşlardan yararlanılarak çıkarılmıştır.

PN 25

Sıcaklık	250 °C (482 °F)	300 °C (572 °F)	350 °C (662 °F)	400 °C (752 °F)
DN 100	25 (362.6)	25 (362.6)	25 (362.6)	25 (362.6)
DN 125	25 (362.6)	25 (362.6)	25 (362.6)	25 (362.6)
DN 150	25 (362.6)	39,4 (571.5)	25 (362.6)	25 (362.6)
DN 200	25 (362.6)	25 (362.6)	25 (362.6)	25 (362.6)
DN 250	25 (362.6)	25 (362.6)	25 (362.6)	24,9 (361.1)

Tab. 26: Basınç - Sıcaklık Tablosu - GOST flanşları PN 25. Tüm veriler bar cinsinde (psig).

PN 40

Sıcaklık	250 °C (482 °F)	300 °C (572 °F)	350 °C (662 °F)	400 °C (752 °F)
DN 100	40 (580.2)	40 (580.2)	40 (580.2)	39,5 (572.9)
DN 125	40 (580.2)	40 (580.2)	39,5 (572.9)	38,4 (557)
DN 150	40 (580.2)	39,4 (571.5)	37,7 (546.8)	36,7 (532.3)
DN 200	40 (580.2)	40 (580.2)	40 (580.2)	40 (580.2)
DN 250	39,2 (568.6)	37,2 (539.5)	35,7 (517.8)	34,6 (501.8)

Tab. 27: Basınç - Sıcaklık Tablosu GOST flanşları PN 40. Tüm veriler bar cinsinde (psig).

PN 63

Sıcaklık	250 °C (482 °F)	300 °C (572 °F)	350 °C (662 °F)	400 °C (752 °F)
DN 100	63 (913.7)	63 (913.7)	63 (913.7)	63 (913.7)
DN 125	63 (913.7)	63 (913.7)	63 (913.7)	63 (913.7)
DN 150	63 (913.7)	63 (913.7)	63 (913.7)	62,5 (906.5)
DN 200	63 (913.7)	63 (913.7)	60,7 (880.4)	59 (855.7)
DN 250	63 (913.7)	60,3 (874.6)	57,8 (838.3)	56,2 (815.1)

Tab. 28: Basınç - Sıcaklık Tablosu GOST flanşları PN 63. Tüm veriler bar cinsinde (psig).

PN 100

Sıcaklık	250 °C (482 °F)	300 °C (572 °F)	350 °C (662 °F)	400 °C (752 °F)
DN 100	100 (1450)	100 (1450)	100 (1450)	98 (1421)
DN 125	100 (1450)	100 (1450)	97,8 (1419)	94,9 (1376)
DN 150	99,7 (1446)	94,5 (1371)	90,6 (1314)	88 (1276)
DN 200	100 (1450)	96,6 (1401)	92,6 (1343)	90 (1305)
DN 250	94,3 (1368)	89,4 (1297)	85,7 (1243)	83,2 (1207)

Tab. 29: Basınç - Sıcaklık Tablosu GOST flanşları PN 100. Tüm veriler bar cinsinde (psig).

PN 160

Sıcaklık	100 °C (212 °F)	150 °C (302 °F)	200 °C (392 °F)	250 °C (482 °F)	300 °C (572 °F)	350 °C (662 °F)	400 °C (752 °F)
DN 50	160 (2321)	160 (2321)	153,5 (2226)	142,3 (2064)	134,9 (1957)	129,3 (1875)	125,6 (1822)
DN 65	160 (2321)	160 (2321)	152,8 (2216)	141,7 (2055)	134,2 (1946)	128,7 (1867)	125 (1813)
DN 80	160 (2321)	160 (2321)	154,6 (2242)	143,4 (2080)	135,9 (1971)	130,3 (1890)	125,6 (1822)
DN 100	160 (2321)	146,2 (2121)	134,0 (1944)	124,3 (1803)	117,8 (1709)	112,9 (1638)	109,7 (1591)
DN 125	155 (2248)	140,2 (2033)	128,5 (1864)	119,2 (1729)	112,9 (1638)	108,3 (1571)	105,1 (1524)
DN 150	160 (2321)	151 (2190)	138,4 (2007)	128,3 (1861)	121,6 (1764)	116,6 (1691)	113,2 (1642)
DN 200	160 (2321)	150,6 (2184)	138 (2002)	128 (1857)	121,3 (1759)	116,3 (1687)	112,9 (1638)
DN 250	157,8 (2289)	142,7 (2070)	130,8 (1897)	121,3 (1759)	115 (1668)	110,2 (1598)	107 (1552)

Tab. 30: Basınç - Sıcaklık Tablosu GOST flanşları PN 160. Tüm veriler bar cinsinde (psig).

VEGA

Baskı tarihi:

Sensörlerin ve değerlendirme sistemlerinin teslimat kapsamı, uygulanması, kullanımı ve işletme talimatları hakkındaki bilgiler basımın yapıldığı zamandaki mevcut bilgilere uygundur.

Teknik değişiklikler yapma hakkı mahfuzdur

© VEGA Grieshaber KG, Schiltach/Germany 2015



31088-TR-150204

VEGA Grieshaber KG
Am Hohenstein 113
77761 Schiltach
Germany

Phone +49 7836 50-0
Fax +49 7836 50-201
E-mail: info.de@vega.com
www.vega.com