



AUSSEN DACHANTENNE

2G/3G/4G AUSSEN DACHANTENNE

This external antenna with LTE wireless standard is compatible with all v2 and Spectre v3 Routers.

The roof antenna range has been designed to provide cost effective coverage booster antennas for 2G/3G/4G devices. The antennas are designed for wall or mast mounting and are weather proof allowing the device to reap the benefits of an antenna mounted in an elevated or external location where the signal is strongest.

The omni-directional radiation pattern allows the antenna to be quickly installed while the global Cellular / GSM / LTE coverage provided by the antenna allows it to be utilised for 2G /3G and 4G applications the world over.

These antennas provide an ideal solution for modem devices whether for domestic or business wireless data or for machine to machine applications and connected devices.

article number

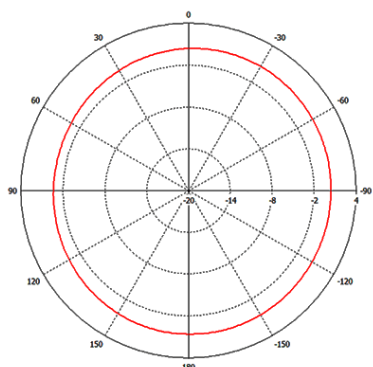
The roof antenna can be ordered directly using the article number 15863v2

FEATURES AND BENEFITS

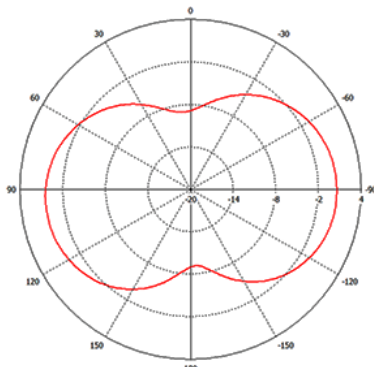
- Cost effective 2G / 3G / 4G signal booster
- Easy installation
- Wall mount or mast mount



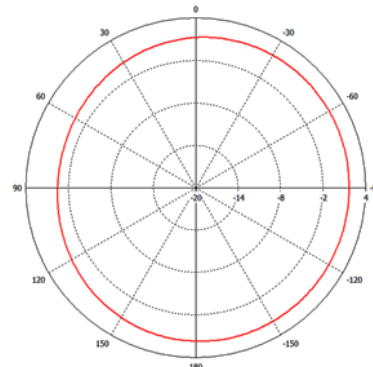
H Plane Plot (700 MHz)



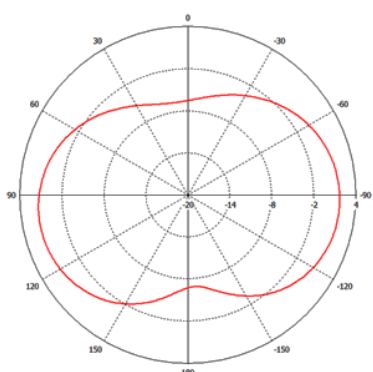
E Plane Plot (700 MHz)



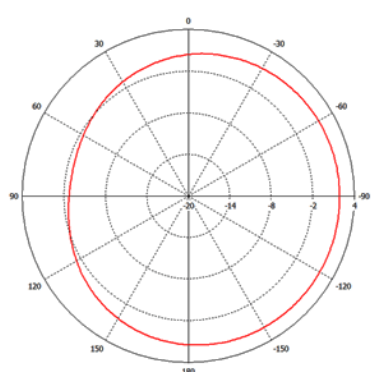
H Plane Plot (800 MHz)



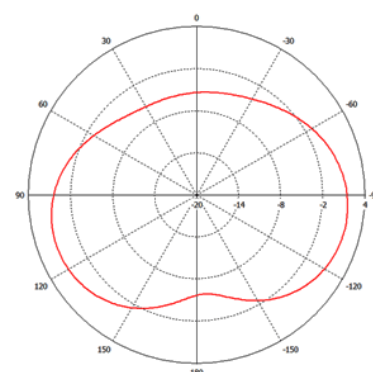
E Plane Plot (800 MHz)



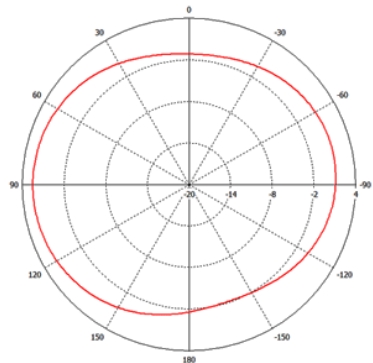
H Plane Plot (900 MHz)



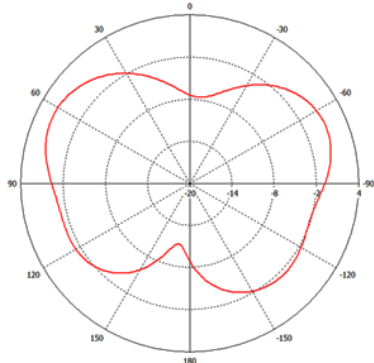
E Plane Plot (900 MHz)



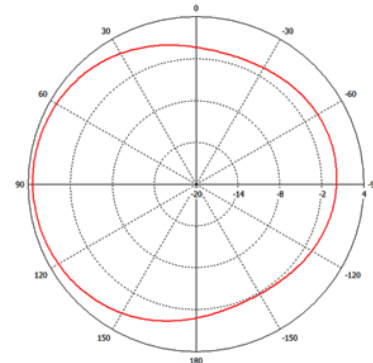
H Plane Plot (1800 MHz)



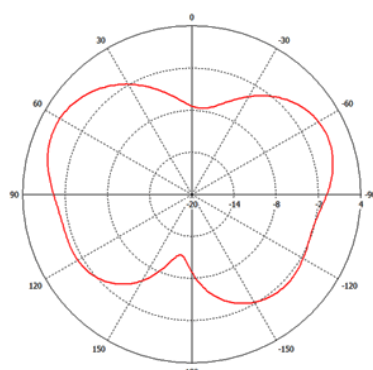
E Plane Plot (1800 MHz)



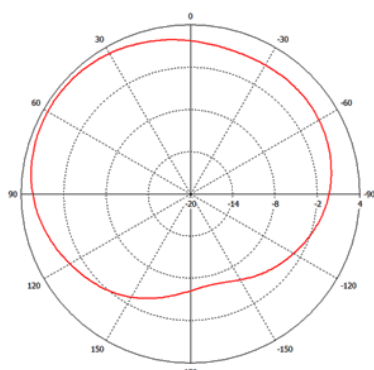
H Plane Plot (2100 MHz)



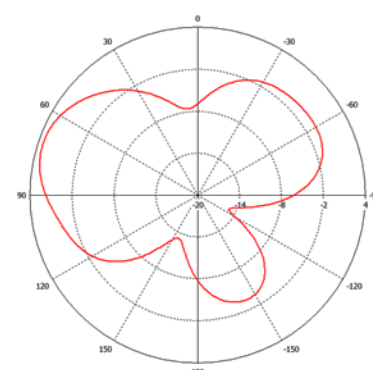
E Plane Plot (2100 MHz)

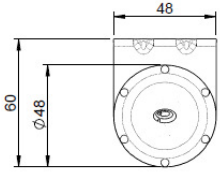
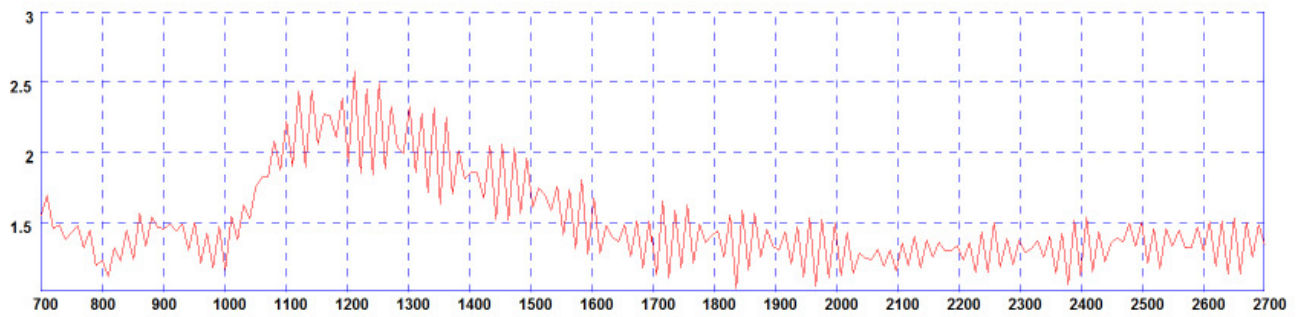


H Plane Plot (2600 MHz)

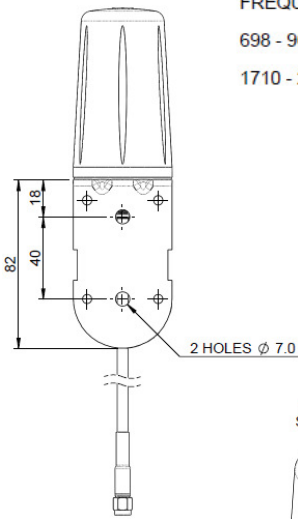


E Plane Plot (2600 MHz)

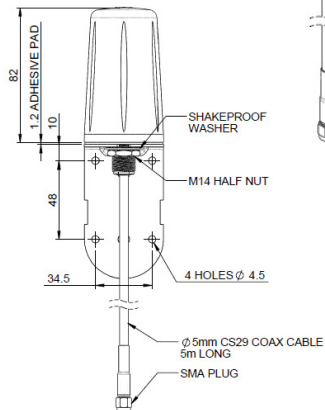
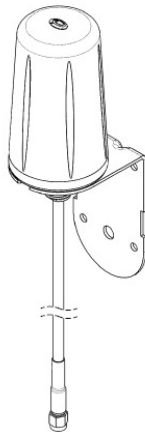




FREQUENCIES.
698 - 960 MHz
1710 - 2700 MHz



ISO VIEW
SCALE 1:2



MECHANICAL SPECIFICATION

Frequency Range (MHz)	698-960, 1710-2700
Operational Band	LTE 700, AMPS / GSM850, GSM900, GSM1800, PCS1900, 3G, UMTS, 2.4 GHz WiFi, 2.6GHz LTE
VSWR	<2.5:1
Peak Gain: Isotropic	698-960 MHz 1710-2700 MHz
Radiated Efficiency excl. cable loss	> 70%
Pattern	Omn-directional
Polarisation	Vertical
Impedance	50 Ω
Max Input Power (W)	50

MECHANICAL DATA

Dimensions (mm):	164 (6.46") 48 (1.89")
Operating Temp (°C)	-40° / +80 °C (-40° / 176° F)
Material	A.B.S., Aluminium and Galvanised Steel
Colour	Black & Natural

MOUNTING DATA

Fixing	Wall mount or Mast mount
Mounting Bracket (mm)	Height 82 (3.2")
	Recommended Screw Fixings 4 (0.16")

CABLE DATA

Type	CS29
Diameter (mm)	5 (0.19")
Length (m)	5 (16' 4")
Connector	SMA male



The connecting & monitoring company

LUCOM GmbH
Ansbacher Straße 2a
90513 Zirndorf

Tel. +49 9127 59460 - 10
E-Mail: info@lucom.de
www.lucom.de

MEMBER OF  **exceer**