



Reliable

Reliable measuring results guarantee consistent quality

Cost effective

High system availability thanks to maintenance-free sensor

User friendly

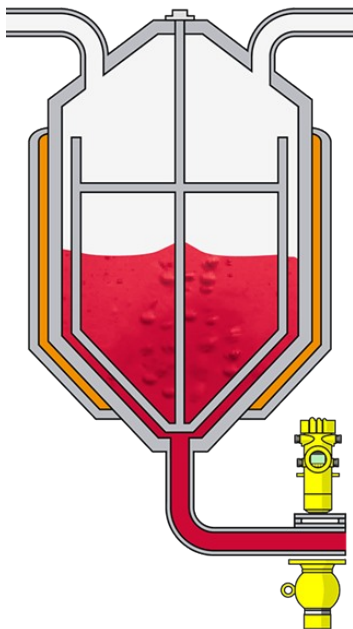
Simple installation with clamping system and additional heat protection

Reactor with fruit concentrate

Density measurement in the pipeline

The reactor is filled with concentrated fruit juice and heated. In order to achieve a higher density, the water content is reduced through evaporation. As soon as the required Brix (density) value is reached, the syrupy fruit juice concentrate is pumped out. The concentrate is then pumped over to a filling machine to be stored in barrels or to a cooling machine where it is hardened and granulated. Reliable density measurement is used to monitor quality in the production process.

More details



MINITRAC 31

Radiometric sensor for density measurement in pipelines

- Reliable density measurement guarantees consistent product quality
- Exact measuring results independent of process conditions and media properties
- Compact sensor allows easy installation

Show Product



VEGASOURCE 31

Source holder houses a radiation capsule and protects it from the external environment

- Minimal space requirement and simple mounting
- Operational safety through mechanical or pneumatic closing system
- Comprehensive shielding also allows use without a control area
- The radiation is carefully focused into a defined beam angle

Show Product



Mounting bracket KV 31

Mounting bracket for simple installation on pipelines

- Simple mounting of MINITRAC and VEGASOURCE
- Adaptable to different pipe diameters
- Optional heat protection insulating material, to protect the detector from overheating

Show Product

MINITRAC 31
[Show Product](#)

Measuring range - Distance

-

Process temperature

-40 ... 60 °C

Process pressure

-

Accuracy

0.1 %

Materials, wetted parts

No wetted material

Seal material

no media contact

Housing material
Aluminium
Stainless steel (precision casting)
Protection rating

IP66/IP67

Output
Profibus PA
Foundation Fieldbus
4 ... 20 mA/HART - four-wire
Ambient temperature

-40 ... 60 °C

VEGASOURCE 31
[Show Product](#)

Ambient temperature

-20 ... 80 °C

Mounting bracket KV 31
[Show Product](#)
